



Cabinet Cooling HCC

General

The HCC control cabinet cooler system is flexible in its installation and designed to cool control cabinets. Special heat exchanger designs ensure energy-efficient operation and a high level of operating reliability.

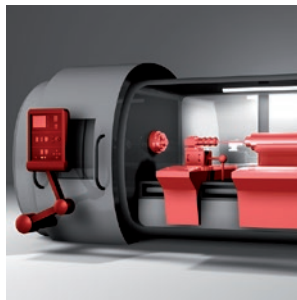
Regardless of the version used, whether air/air, air/water or refrigeration, the HCC series ensures optimal conditions and improved service life for your electronic components.

Product Features

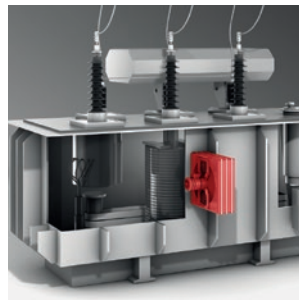
- Control cabinet cooler for roof installation or wall/door mounting
- Cooling capacities from 0.1 to 15 kW
- For all cooling applications in switchgears or control cabinets
- Stand-alone control of the system by means of innovative controller design
- Active cooler with compressor and passive cooler with air/air or air/water available

Application Field

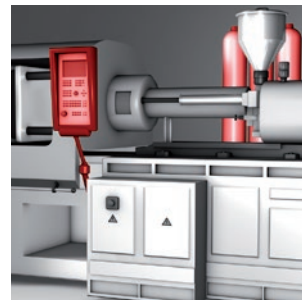
- Machine tools
- Presses
- Milling machines
- Welding systems
- Laser cooling



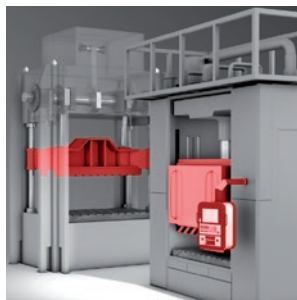
Machine tools



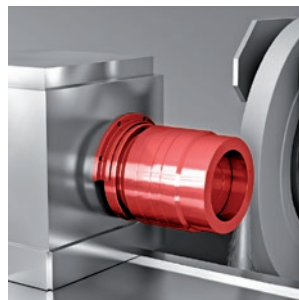
Thermal power plants



Plastic injection machines



Presses



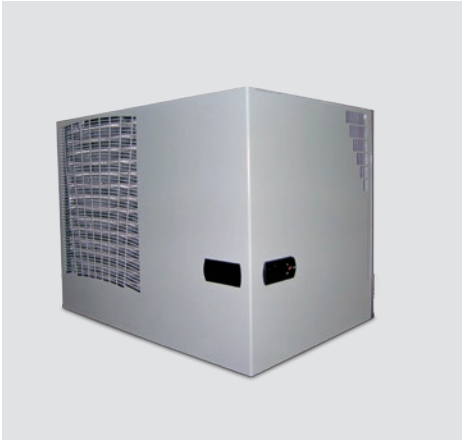
Lathes



Automotive Industry

Technical Data

Active coolers



HCC-T-C



HCC-S-C

HCC-T-C top-mounted – refrigeration coolers

	Electrical supply [V - Ph - Hz]	Cooling capacity [W]	Dimensions height x width x depth [mm]	Maximum current consumption [A]	Starting current [A]	Power consumption [W]	Temperature setting range [°C]	Ambient temperature [°C]	Weight [kg]
HCC-T-C-03	230 - 1 - 50/60 115 - 1 - 60	330 270	180 x 476 x 324	1.4 2.8	5.0 10.0	240	25 - 45	20 - 55	17.0 18.0
HCC-T-C-09	230 - 1 - 50/60 115 - 1 - 60 400 - 2 - 50 460 - 2 - 60	900	335 x 600 x 325	3.2 8.0 1.8 1.8	15.0 15.0 31.0 31.0	630	25 - 45	20 - 55	31.5 31.5 33.0 33.0
HCC-T-C-14	230 - 1 - 50/60 115 - 1 - 60 400 - 2 - 50 460 - 2 - 60	1,400	450 x 600 x 400	5.2 10.0 2.8 2.8	17.0 34.0 31.0 31.0	950	25 - 45	20 - 55	48.0 48.0 53.0 53.0
HCC-T-C-20	230 - 1 - 50/60 400 - 2 - 50 460 - 2 - 60	2,000	450 x 600 x 400	5.7 3.3 3.3	22.0 31.0 31.0	1,200	25 - 45	20 - 55	51.5 58.5 58.5
HCC-T-C-28	230 - 1 - 50/60 400 - 3 - 50 460 - 3 - 60	2,700	480 x 800 x 450	7.0 2.3 2.3	38.0 16.0 16.0	1,580 1,580 1,580	25 - 45	20 - 55	74.5 76.5 76.5

Accessories: Fitted with electronic temperature regulator (except HCC-T-C-03)

Optional: Special colouring, UL design and stainless-steel housing available on request

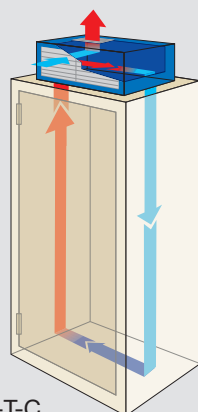
HCC-S-C side-mounted – refrigeration cooler

	Electrical supply [V - Ph - Hz]	Cooling capacity [W]	Dimensions height x width x depth [mm]	Maximum current consumption [A]	Starting current [A]	Power consumption [W]	Temperature setting range [°C]	Ambient temperature [°C]	Weight [kg]
HCC-S-C-03	230-1-50/60 115-1-60	360-380 380	443 x 324 x 206	1.3 / 1.4 2.9	9.8 18.0	190 - 220 220	+25 / +45	+20 / +55	17.0
HCC-S-C-05	230-1-50/60	550-580	642 x 313 x 223	1.35 / 1.5	15.0	310 - 340	+25 / +45	+20 / +55	23.0
	400-2-50	500		0.7	15.0	310 - 340	+25 / +45		26.0
	460-2-60	550		0.75	15.0	310 - 340	+25 / +45		23.0
	48 V DC	500		5.7	-	300	+25 / +35		23.0
	115-1-60	580		4.7	17.0	340	+25 / +45		23.0
HCC-S-C-07S	230-1-50/60	800-850	550 x 279 x 286	1.9 / 2.0	9.6	450 - 490	+25 / +45	+20 / +55	20.0
HCC-S-C-08	230-1-50/60	850-900	642 x 313 x 223	2.6 / 2.7	20.0	420 - 600	+25 / +45	+20 / +55	27.0
	400-2-50	800-850		1.0	20.0	420 - 600			30.0
	400-2-60	800-850		1.4	20.0	420 - 600			30.0
	115-1-60	900		7.2	28.0	600			27.0
HCC-S-C-11	230-1-50/60	1,100-1,150	912 x 410 x 248	3.1 / 3.4	18.0	510 - 650	+25 / +45	+20 / +55	44.0
	400-2-50	1,050-1,100		1.7 / 1.8	30.0	510 - 650			50.0
	460-2-60	1,050-1,100		1.7 / 1.8	30.0	510 - 650			50.0
	115-1-60	1,150		7.5	34.0	650			44.0
HCC-S-C-15	230-1-50/60	1,500-1,600	912 x 410 x 248	3.9 / 4.3	28.0	750 - 825	+25 / +45	+20 / +55	46.0
	400-2-50	1,400-1,500		2.5 / 2.6	110.0	750 - 825			53.0
	460-2-60	1,400-1,500		2.5 / 2.6	100.0	750 - 825			53.0
	115-1-60	1,600		9.4	50.0	825			46.0
HCC-S-C-15S	230-1-50/60	1,500-1,600	950 x 400 x 304	3.9 / 4.3	28.0	750 - 825	+25 / +45	+20 / +55	65.0
	400-3-50	1,400-1,500		2.0 / 2.2	20.0	810 - 890			
	460-3-60	1,400-1,500		2.0 / 2.2	20.0	810 - 890			
HCC-S-C-20	230-1-50/60	2,100-2,200	1,005 x 409 x 263	4.8 / 5.5	34.0	1,120 - 1,240	+25 / +45	+20 / +55	48.0
	400-3-50	2,000-2,100		2.5 / 2.7	22.0	1,100 - 1,200			
	460-3-60	2,000-2,100		2.5 / 2.7	22.0	1,100 - 1,200			
	115-1-60	2,200			60.0	1,240			
HCC-S-C-25S	230-1-50/60	2,550-2,750	1,580 x 400 x 305	4.2 / 5.2	18.0	1,100 - 1,280	+25 / +45	+20 / +55	65.0
	400-3-50	2,400-2,600		3.0 / 3.2	22.0	1,230 - 1,380			
	460-3-60	2,400-2,600		3.0 / 3.2	22.0	1,230 - 1,380			
HCC-S-C-30	230-1-50/60	3,000-3,150	1,217 x 511 x 347	5.0 / 5.5	35.0	1,370 - 1,510	+25 / +45	+20 / +55	75.0
	400-3-50	2,850-3,000		2.7 / 3.0	19.0	1,370 - 1,510			
	460-3-60	2,850-3,000		2.7 / 3.0	19.0	1,370 - 1,510			
HCC-S-C-40	230-1-50/60	4,000-4,100	1,217 x 511 x 347	8.2 / 9.4	42.0	1,730 - 1,950	+25 / +45	+20 / +55	80.0
	400-3-50	3,950-4,050		2.9 / 4.0	25.0	1,730 - 1,950			
	460-3-60	3,950-4,050		2.9 / 4.0	25.0	1,730 - 1,950			
HCC-S-C-60	400-3-50	5,600-5,950	1,405 x 554 x 404	4.2 / 5.7	53.0	2,670 - 3,600	+25 / +45	+20 / +55	100.0
	460-3-60	5,600-5,950		4.2 / 5.7		2,670 - 3,600			

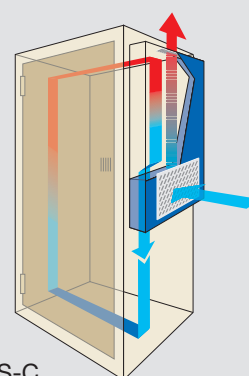
Accessories: Fitted with electronic temperature regulator

Optional: Special colouring, UL design and stainless-steel housing available on request

Example installation, active cooler



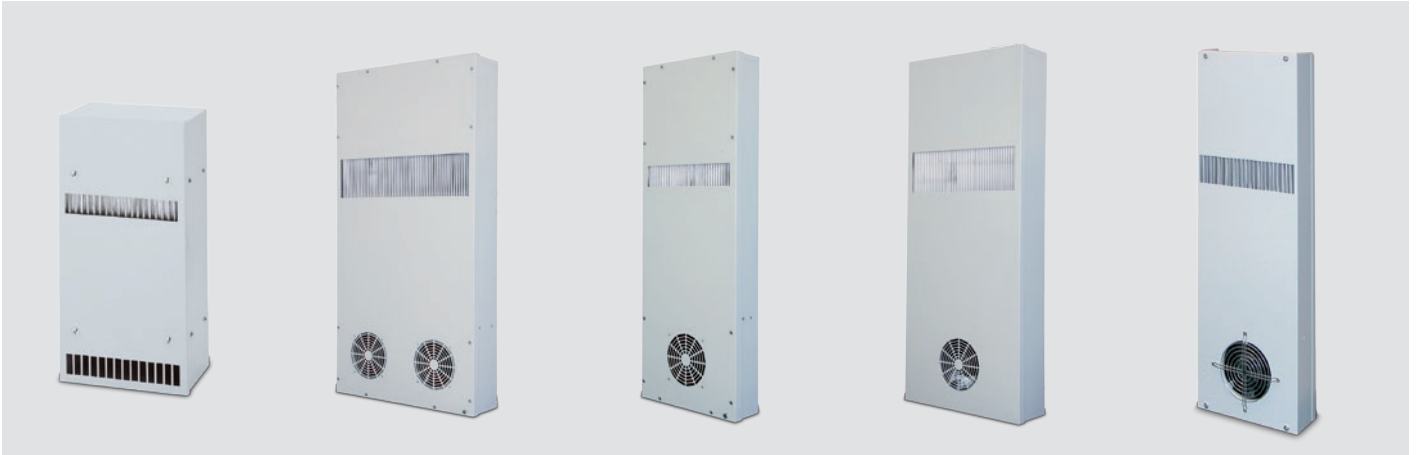
HCC-T-C



HCC-S-C

Technical Data

Passive coolers



HCC-S-AA



HCC-S-AW



HCC-T-AW

HCC-S-AA side-mounted – air/air cooler

	Electrical supply [V - Ph - Hz]	Specific capacity in watt/K	Dimensions height x width x depth [mm]	Current consumption (A)	Power consumption [W]	Temperature setting range [°C]	Ambient temperature [°C]	Weight [kg]
HCC-S-AA-16	230 -1- 50/60 115 -1- 60	16	410 x 204 x 109	0.60	64 40	-5 / +55	-5 / +55	4.6
HCC-S-AA-30	48 V DC	30	780 x 255 x 90	4.30	210	-5 / +55	-20 / +55	15.0
HCC-S-AA-35	230 -1- 50/60 230 -1- 60 115 -1- 60	35	780 x 254 x 90	0.72 0.80 1.10	160 150 180	-5 / +55	-5 / +55	7.5
HCC-S-AA-50	230 -1- 50/60 230 -1- 60 115 -1- 60	50	780 x 312 x 90	0.72 0.80 1.40	160 150 180	-5 / +55	-5 / +55	9.5
HCC-S-AA-60	230 -1- 50/60 48 V DC 115 -1- 60	60	1,030 x 365 x 110	0.76 / 0.80 4.30 2.20	170 - 180 210 265	-5 / +55	-20 / +55 -20 / +55 -40 / +55	16.0
HCC-S-AA-80	230 -1- 50/60 230 -1- 60 115 -1- 60	80	1,250 x 311 x 108	1.00 1.30 2.30	170 180 230	-5 / +55	-5 / +55	20.0

Optional: Special colouring, UL design and stainless-steel housing available on request

HCC-S-AW side-mounted – air/water cooler

	Electrical supply [V - Ph - Hz]	Specific capacity T = 25 K	Dimensions height x width x depth [mm]	Current consumption (A)	Power consumption [W]	Water flow rate [l/h]	Max. water pressure [kPa]	Pressure loss, water side [kPa]	Temperature range, cabinet side [°C]	Weight [kg]
HCC-S-AW-06	230-1-50/60 230-1-60 115-1-60	870	403 x 306 x 113	0.28 / 0.24 0.50 0.50	33 / 36 24 24	150	500	2	+10 / +50 0.2 0.2	7.0
HCC-S-AW-15	230-1-50/60 230-1-60 115-1-60	2,200	916 x 402 x 206	0.26 / 0.34 0.80 0.80	58 / 75 75 90	150	1,000	30	+10 / +50 0.2 0.2	21.0
HCC-S-AW-25	230-1-50/60 230-1-60 115-1-60	3,100	916 x 402 x 206	0.38 / 0.40 1.00 1.00	85 / 90 90 115	500	1,000	63	+10 / +50 0.2 0.2	22.0
HCC-S-AW-50	230-1-50/60 230-1-60 115-1-60	6,700	916 x 402 x 206	0.70 / 0.95 1.30 2.00	115 / 215 285 155	860	1,000	40	+10 / +50 +10 / +50 +10 / +50	39.0

Optional: Thermostat with solenoid valve, special colouring, UL design and stainless-steel housing available on request

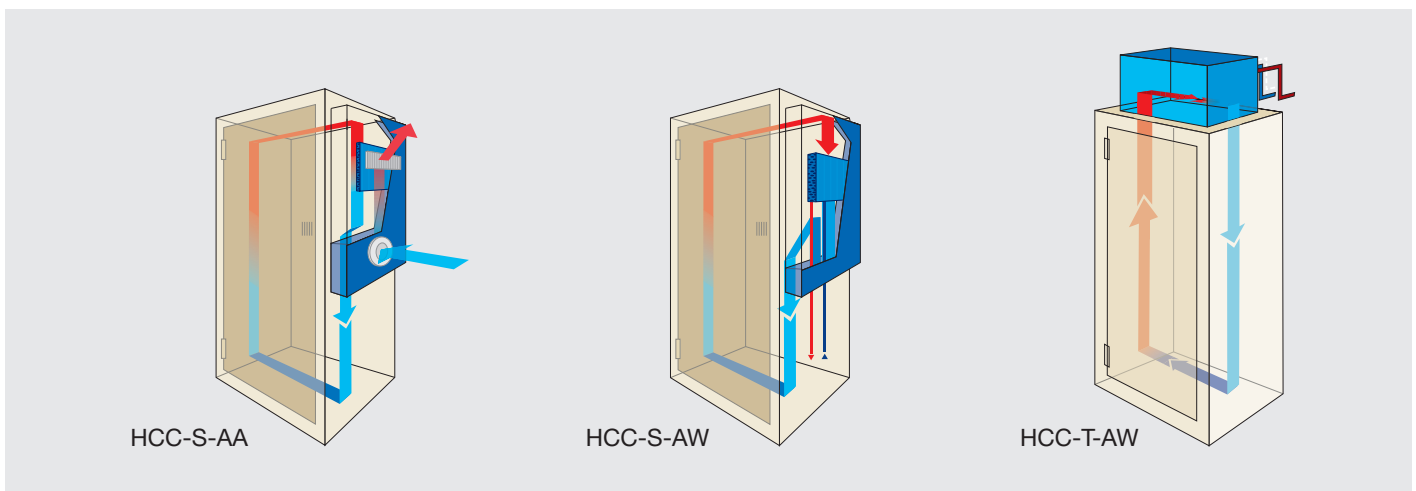
HCC-T-AW top-mounted installation – air/water coolers

	Power supply [V - Ph - Hz]	Specific capacity T = 10 °C	Dimensions height x width x depth [mm]	Maximum current consumption [A]	Power consumption [W]	Temperature setting range [°C]	Water temperature °C	Weight [kg]
HCC-T-AW-15H	230-1-50/60	2,200	200 x 800 x 400	0.26 / 0.34	58 / 75	+10 / +50	+10 / +30	30.0
HCC-T-AW-50H	230-1-50/60	6,700	255 x 905 x 509	0.70 / 0.95	155 / 215	+10 / +50	+10 / +30	39.0

Optional: Special colouring and stainless-steel housing available on request

All units are designed for indoor applications only.
Solutions for outdoor applications are available on request!

Example installation, passive cooler



From the prototype to series production

- **Planning and advice** from our specialists on site.
You provide the task, we supply the solution.
- Our own **development centre** produces market-driven, energy-efficient and cutting-edge solutions, to stay one step ahead of the “state of the art”.
- In order to provide **quality** that is consistently very good, all equipment must undergo a function and performance test.
- For **service** you can call on an international network of service engineers.
Consultation and service – with global reach.

Note

The information in this brochure relates to the operating conditions and applications described.

For applications and operating conditions not described, please contact the relevant technical department.

Subject to technical modifications and corrections.

H.I.B HYDAC INTERNATIONAL

H.I.B Systemtechnik GmbH
Winterbrückenweg 30
86316 Friedberg-Derching
Germany
Tel.: +49 821/747 71-400
Fax: +49 821/747 71-410
E-mail: info@h-i-b.de
Internet: www.h-i-b.de

HYDAC COOLING GMBH
Industriegebiet
66280 Sulzbach / Saar
Germany
Tel.: +49 6897/509-01
Fax: +49 6897/509-454
E-mail: cooling@hydac.com
Internet: www.hydac.com